




Exhibitions


# SALT

SEA & THE ENVIRONMENT FESTIVAL  
21 - 24 October 2015



Family

Food



Theatre



Swims



Walks

A New Festival For  
Folkestone coming to:

Folkestone Harbour Arm  
Folkestone Quarterhouse  
Folkestone Library  
The Brewery Tap  
Sunflower House  
Lindon Studio



Talks



Workshops

[www.quarterhouse.co.uk](http://www.quarterhouse.co.uk)

 Folkestone  
Quarterhouse

 Canterbury  
Christ Church  
University

**folkestone**  
fringe

# SALT

## SEA & THE ENVIRONMENT FESTIVAL

SALT is a new festival about the sea and the environment co-curated by Folkestone Quarterhouse, Folkestone Fringe and Karen Shepherdson of Canterbury Christ Church University. Talks, workshops, installations, shows and exhibitions will explore the unique coastal environment of this region, the communities it sustains and consider what the future might hold.

## Wednesday 21 October

### WORKSHOP

Helen Lindon & Dover Arts Development

#### A Table of Elements Workshop

Harbour Arm, 11am - 4pm, Tickets £20

The artists, together with participants, will create a large scale collaborative piece of work in response to their mood and weather on the day.

### LAUNCH

#### SALT Launch

Folkestone Library, 6.45pm, Free

Join us at Folkestone Library for the official launch of SALT: Sea and Environment Festival with co-curators Karen Shepherdson, Diane Dever and Allegra Galvin. Don't forget to book into The Edge following the launch to kick-start your festival!



### PERFORMANCE

Transport

#### The Edge

Folkestone Library, 7.30pm

(Repeats 22 Oct 7.30pm,

24 Oct 2.30pm)

Adults £10/ Conc £8

Performing four unique site-specific performances, 'The

Edge' takes us on a touching and fantastical journey through weather, time and friendship exploring the mythical place where the land meets the sea, posing vital questions about our future in a rapidly changing environment. For ages 14+, 60 mins.

*'Ingeniously told... an utter delight' \*\*\*\* The Telegraph on Transport's 1001 Nights*

## Thursday 22 October

### EXHIBITION

#### The Carpet Sea by Anne Wimsett

Quarterhouse, 10am - 6pm, 22 - 24 Oct

A fabric artwork by local artist Anne Wimsett will be on display in the Quarterhouse foyer for the duration of SALT.

### WORKSHOP

#### Beach School for Educators

Meet at Quarterhouse, 4.30pm - 6.30pm,

Tickets £5

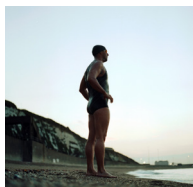
A session with Brain Waves Beach School for educators, carers and teachers exploring the benefits of 'free play' in natural environments, informal mindfulness techniques and a nurturing approach.

### RUSH HOUR ARTIST TALK

#### Beyond the View: The Seaside as Photograph

The Brewery Tap, 5pm - 6pm, Free

Meet the artists and take this opportunity to learn more about their work. See pg.4 for exhibition info.



### FILM & TALK

Channel Swimming Association

#### Channel Swim Night

Kanalschwimmer + Post

#### Show Talk

Quarterhouse, 6pm,

Tickets £5

In this documentary, filmmaker Jörg Adolph follows three Channel swimmers as they undertake one of the greatest physical and mental challenges in the world.

### PERFORMANCE

Transport

#### The Edge + Post Show Talk

Folkestone Library, 7.30pm

Post show talk with Andy Stevens, a senior advisor on the management of Kent's coasts.

## Friday 23 October

### LUNCHTIME WALK

#### Foraging Walk followed by Lunch at Rocksalt

Meet at Quarterhouse, 10.30am

Lunch at Rocksalt, 12.30pm

Tickets £45

For over a decade now foragers have been supplying wild ingredients to the best chefs and restaurants around the UK. Join them for a foraging walk followed by lunch at Rocksalt using your finds!

### RUSH HOUR ARTIST TALK

#### Between The Tides

Harbour Arm, 5pm - 6pm, Free

Meet the artists and take this opportunity to learn more about their work. See pg.4 for exhibition info.

## Friday 23 October



### PERFORMANCE

**Smoking Apples**

**In Our Hands**

**Quarterhouse, 7.30pm**

**Adults £10/ Conc £8**

Using puppetry and visual theatre *In Our Hands* tells the story of Alf, a trawler fisherman whose experience and loyalty

have put him, and his boat, at the top of the game. But times are changing and so are the rules and regulations surrounding the industry, will Alf adapt in order to survive? For ages 11+. Duration 60 mins.



## **SALT Festival Feasts**

**Saturday 24 October**

### **Artist Breakfasts**

**Brewery Tap, Lindon Studio, The Harbour Arm**

**10am, Tickets £5**

We invite you to breakfast with SALT artists with delicious kedgeree by The Pullman:

Seasoned rice with cumin and curried spices, pan fried with peas, diced tomato and fresh parsley. Topped with smoked mackerel and soft boiled egg. Plus tea or coffee.

### **Fish Pie Lunch**

**Quarterhouse, 12.30pm, Tickets £7**

A traditional British dish by The Pullman, made using the best local fish. A hearty mix of poached fish; cod, smoked haddock, salmon and prawns served in a rich cream sauce. Topped with creamy mash and grilled Canterbury Ceddar. Served with a pinch of autumn greens.

### **Sea Shanty performance & Group Dinner**

**Harbour Arm, 6.30pm, Tickets £12**

Join us for our end of festival finale celebrating our coastal environment! Enjoy Spanish classics from The Sole Kitchen; empanadas, Andalusian paella, flao (Spanish cheesecake) accompanied by Sangria with a twist. With live music from the Whitstable based Shipwright Shanty crew and singer-songwriter Emily Watts.



## Saturday 24 October

### FAMILY TALK

**Philip Hoare**

**What Do Whales Do?**

**Quarterhouse, 10am - 10.45am, Tickets £4**

What would it be like to be swallowed by a whale? Are dolphins smarter than us? Could an elephant really stand on a whale's tail? Find out the answers to all this and more with Philip Hoare, writer, broadcaster and whalehead. For ages 5+.

### WORKSHOP

**Re-mapping Folkestone**

**Quarterhouse, 10.30am - 12.30pm, Tickets £5**

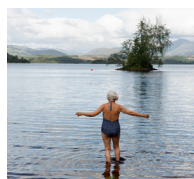
In this hands-on workshop led by Peter Vujakovic and Alex Kent (Canterbury Christ Church University), we will explore how maps tell stories about the places we live by creating 'mental maps' and by contributing to an exciting new map of Folkestone. For ages 11+ (children must be accompanied).

### WALK/ WORKSHOP

**Smell Mapping the Seaside**

**Meet at Quarterhouse, 10.30am - 12.30pm, Tickets £5**

Walking nose-first proposes a new understanding of place and this workshop is designed to enable participants to discover the hidden smells of Folkestone and then to map the experience.



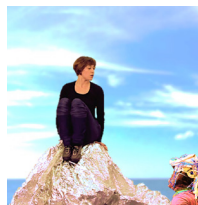
### TALK

**Susie Parr Talk & Swim**

**Brewery Tap, 11am - 12pm, Tickets £7**

Passionate outdoor swimmer Susie Parr explores the fascinating social and cultural history of bathing in Britain's

seas, lakes, ponds and rivers. The talk will be followed by a group swim from Sunny Sands and a lunch break with fish pie available at Quarterhouse.



### PERFORMANCE

**Tall Tales Big Moves**

**Sea Story**

**Quarterhouse**

**11am & 2.30pm**

**Adults £6/ Children £5/**

**Family £20**

Weaving together 100 stories written specially for us by

young people from across the UK, let Sea Story take you on a magical journey over, under, and through the sea. Expect storms, shipwrecks, mermaids, jellyfish and a very curious sea creature. Suitable for ages 5+

### TALK

**Kenwood Ladies' Pond Association**

**Wild Swimming Walks**

**Quarterhouse, 1.30pm - 2.30pm, Tickets £7**

Join the famous swimming ladies of Hampstead's Kenwood Ladies' Pond, discussing swimming walks of the South East.



## Saturday 24 October

### PERFORMANCE

#### Transport

#### The Edge + Post Show Talk

#### Folkestone Library, 2pm

Post show talk with Jo Royle renowned skipper and environmentalist.

### TALK

#### Philip Hoare

#### The Sea Inside

#### Harbour Arm, 2pm - 3pm, Tickets £7

Author, presenter and curator Philip Hoare, who has been writing about, travelling on, and swimming in the sea for 15 years, discusses what the sea says about our past, present and future.

### FAMILY WORKSHOP

#### Feral Theatre

#### Lost Species Workshop

#### Quarterhouse, 3pm, Free, drop-in until 6pm

Learn how species have been affected by commercial fishing and what we can do to help. Help create a shrine to celebrate, honour and remember two special fish. For all ages.

### FAMILY WORKSHOP

#### Terrarium Workshop

#### Quarterhouse, 3.30pm, groups of up to 4, £20

Create your own micro climate in the Coastal

Terrarium workshop led by artist Matt Rowe.

Participants will explore the shoreline and respond to the impact of man-made debris's present around our coastal landscape.

### TALK

#### Prof. Jon French

#### Zen and the Art of Living with 21st Century

#### Coastal Change

#### Harbour Arm, 3.30pm - 4.30pm, Tickets £7

What will our coasts look like in 2100? Prof. Jon French (Head of Geography at UCL) explores the relationship between models and reality, science and society.

### WORKSHOP

#### Sea Shanty Workshop

#### Quarterhouse, 4pm - 5.30pm, Tickets £5

Improve your nautical vocals and learn how to sing a selection of traditional sea shanties. For all ages.

### TALK

#### Sea Cocktails

#### Harbour Arm, 5pm, Cocktails £4

Warm the cockles of your heart with a Dark 'N Stormy cocktail, made with dark rum and ginger beer served over ice and garnished with a slice of lime.

### PERFORMANCE

#### Transport

#### The Edge

#### Folkestone Library, 6.30pm

## Exhibitions / Installations

### Fevered Sleep

#### It's The Skin You're Living In

#### Quarterhouse, 22-24 Oct, 10am - 6pm

Made from broken images, a dismantled polar bear costume, repeated actions and walking, walking, walking. A strange, sad and funny meditation on being human and being animal, lost in a changing world.

### Folkestone Arts Collective

#### Sunflower House, 22-24 Oct, 10am - 6pm

An exhibition featuring sea themed work by the Folkestone Arts Collective. Artists include Malcolm Allen, Phyllis McDowell, Mike Tedder and Kamilla Sztzyber.

### Feral Theatre & ONCA

#### Future Coast Installation

#### Quarterhouse, 22-24 Oct, 10am - 6pm

What would you say if you could leave a message for yourself from an imagined new world? Brighton's Onca Arts & Ecology encourage us all to consider the realities of a climate-changed future.

*\*Drop-in workshop Sat 24 Oct, Quarterhouse, 3pm - 6pm*

### Helen Lindon & Dover Arts Development

#### A Table of Elements

#### Lindon Studio, 22-24 Oct, 10am - 6pm

An exhibition of work by Helen Lindon, Joanna Jones and Clare Smith exploring 'the elements' and the related ideas of climate and weather.

*\*Workshop Wed 21 Oct, Harbour Arm, 11am*

### Emma Critchley

#### In Our Blood

#### Harbour Arm, Fri 12pm - 10pm, Sat 9am - 10pm

At the foot of Cliftonville lies a 4-acre tidal pool, a concrete remnant of Margate's heyday. This immersive piece of slow-cinema observes the community of people who regularly bathe in the wild yet contained space. 30 min loop, screening every 1/2 hr.

### Karen Shepherdson & Nigel Breadman

#### Between the Tides

#### Harbour Arm, Fri 12pm - 10pm, Sat 9am - 10pm

This exhibition examines how the coastal environment impacts upon the photographic practice of both Nigel Breadman and Karen Shepherdson.

*\*Rush hour Artist Talk: Fri 23 Oct, Harbour Arm, 5pm*

### Beyond the View: The Seaside as Photograph

#### Brewery Tap, 22-24 Oct, 10am - 6pm

An exhibition that explores the work of commercial seaside photographers of the 20th Century. We encourage you to bring your own images to add to the collection to tell the story of Folkestone's coastal community.

*\*Rush hour Artist Talk: Thu 22 Oct, Brewery Tap, 5pm*



Creative  
Foundation

THE ROGER  
DE HAAN  
CHARITABLE TRUST



Supported using public funding by  
ARTS COUNCIL  
ENGLAND

Folkestone  
Helen & Norman Aldrich  
Foundation

